













B. Wylie

Worklist: 1223

<u>LAB_CASE</u>	<u>ITEM</u>	<u>TASK_ID</u>	<u>DESCRIPTION</u>	
C2016-0651	1	61963	6.1.2 Blood Cannabinoids by LC	
P2016-0423	1	61964	6.1.2 Blood Cannabinoids by LC	
P2016-0433	1	61952	6.1.2 Blood Cannabinoids by LC	
P2016-0438	1	61965	6.1.2 Blood Cannabinoids by LC	
P2016-0441	1	61966	6.1.2 Blood Cannabinoids by LC	
P2016-0473	1	61967	6.1.2 Blood Cannabinoids by LC	
P2016-0474	1	61968	6.1.2 Blood Cannabinoids by LC	
P2016-0475	1	61969	6.1.2 Blood Cannabinoids by LC	
P2016-0572	1	61959	6.1.2 Blood Cannabinoids by LC	
P2016-0614	1	61970	6.1.2 Blood Cannabinoids by LC	
P2016-0667	1	61971	6.1.2 Blood Cannabinoids by LC	
P2016-0669	1	61972	6.1.2 Blood Cannabinoids by LC	

Worklist Report

Worklist Path:	C:\MassHunter\ISP Methods\worklists\CS Combined 080216.wkl
Date Modified:	08/02/2016 02:45:07 PM
Date Printed:	08/02/2016 02:45:12 PM

Worklist Run Parameters

Operator Name:	62340
Run Type:	Standard Start
Part of Method to Run:	Acquisition Only
Execution for Acquisition-DA:	Synchronous
Acquisition Method Path:	C:\MassHunter\ISP Methods\Acquisition
DA Method Path:	D:\MassHunter\methods
Data File Path:	C:\MassHunter\Data\2016\Combined\072216 CS
Pre-Worklist Script:	---
Post-Worklist Script:	SCP_InstrumentStandby(){MH_Acq_Scripts.exe}
Acquisition Clean Up Script:	SCP_InstrumentStandby(){MH_Acq_Scripts.exe}
Overlapped Injection:	No
Clear sample selection after run:	Yes
Wait Time for Ready(Min):	10
Threshold Disk Value(GB):	10
Comment:	---


Plate Barcode Information

Plate	Barcode
P1	
P2	

Worklist Table

Sample Position	Sample Name	Method	Data File	Sample Type	Level Name	Comment	Info.
P2-A1	Blank	isp blood cannabinoids Poky 2016-1.m	Blank1-r001.d	Blank		AM 6.1.2 Cannabinoids by LCQQQ	
P2-A1	Blank	isp blood cannabinoids Poky 2016-1.m	Blank2-r001.d	Blank		AM 6.1.2 Cannabinoids by LCQQQ	
P2-A2	Blood: 1_5 ng/mL	isp blood cannabinoids Poky 2016-1.m	B_CAL1-r001.d	Calibration	1	AM 6.1.2 Cannabinoids by LCQQQ	c-THC @5ng/mL, all others @1 ng/mL
P2-A3	Blood: 2_10 ng/mL	isp blood cannabinoids Poky 2016-1.m	B_CAL2_r001.d	Calibration	2	AM 6.1.2 Cannabinoids by LCQQQ	c-THC @10ng/mL, all others @2 ng/mL
P2-A4	Blood: 5_25 ng/mL	isp blood cannabinoids Poky 2016-1.m	B_CAL3_r001.d	Calibration	3	AM 6.1.2 Cannabinoids by LCQQQ	c-THC @25ng/mL, all others @5 ng/mL
P2-A5	Blood: 10_50 ng/mL	isp blood cannabinoids Poky 2016-1.m	B_CAL4_r001.d	Calibration	4	AM 6.1.2 Cannabinoids by LCQQQ	c-THC @50ng/mL, all others @10 ng/mL
P2-A6		isp blood cannabinoids Poky 2016-1.m	B_CAL5_r001.d	Calibration	5		c-THC @125ng/mL, all

Sample Position	Sample Name	Method	Data File	Sample Type	Level Name	Comment	Info. 
	Blood: 25_125 ngmL					AM 6.1.2 Cannabinoids by LCQQQ	others @25 ng/mL
P2-A7	Blood: 50_250 ngmL	isp blood cannabinoids Poky 2016-1.m	B_CAL6_r001.d	Calibration	6	AM 6.1.2 Cannabinoids by LCQQQ	c-THC @250ng/mL, all others @50 ng/mL
P2-A8	Blood: 100_500 ngmL	isp blood cannabinoids Poky 2016-1.m	B_CAL7_r001.d	Calibration	7	AM 6.1.2 Cannabinoids by LCQQQ	c-THC @500ng/mL, all others @100 ng/mL
P2-A1	Blank	isp blood cannabinoids Poky 2016-1.m	Carryover blank1_r001.d	Blank		AM 6.1.2 Cannabinoids by LCQQQ	
P2-A9	Blood Negative Control	isp blood cannabinoids Poky 2016-1.m	B-NC-r001.d	Sample		AM 6.1.2 Cannabinoids by LCQQQ	Negative Blood UTAK Lot B1013
P2-B1	Blood PC 1	isp blood cannabinoids Poky 2016-1.m	B-POS Ctrl 1-r001.d	Sample		AM 6.1.2 Cannabinoids by LCQQQ	Positive Control-UTAK B1013 + WS060716
P2-A1	Blank	isp blood cannabinoids Poky 2016-1.m	Carryover blank2_r001.d	Blank		AM 6.1.2 Cannabinoids by LCQQQ	
P2-A9	Blank C2016-0651-1	isp blood cannabinoids Poky 2016-1.m	C2016-0651-1_BLK_r001.d	Blank		AM 6.1.2 Cannabinoids by LCQQQ	
P2-B2	C2016-0651-1	isp blood cannabinoids Poky 2016-1.m	C2016-0651-1-r001.d	Sample		AM 6.1.2 Cannabinoids by LCQQQ	Blood
P2-A9	Blank P2016-0423-1	isp blood cannabinoids Poky 2016-1.m	P2016-0423-1_BLK_r001.d	Blank		AM 6.1.2 Cannabinoids by LCQQQ	
P2-B3	P2016-0423-1	isp blood cannabinoids Poky 2016-1.m	P2016-0423-1-r001.d	Sample		AM 6.1.2 Cannabinoids by LCQQQ	Blood
P2-A9	Blank P2016-0433-1	isp blood cannabinoids Poky 2016-1.m	P2016-0433-1_BLK_r001.d	Blank		AM 6.1.2 Cannabinoids by LCQQQ	
P2-B4	P2016-0433-1	isp blood cannabinoids Poky 2016-1.m	P2016-0433-1-r001.d	Sample		AM 6.1.2 Cannabinoids by LCQQQ	Blood
P2-A9	Blank P2016-0438-1	isp blood cannabinoids Poky 2016-1.m	P2016-0438-1_BLK_r001.d	Blank		AM 6.1.2 Cannabinoids by LCQQQ	
P2-B5	P2016-0438-1	isp blood cannabinoids Poky 2016-1.m	P2016-0438-1-r001.d	Sample		AM 6.1.2 Cannabinoids by LCQQQ	Blood
P2-A9	Blank P2016-0441-1	isp blood cannabinoids Poky 2016-1.m	P2016-0441-1_BLK_r001.d	Blank		AM 6.1.2 Cannabinoids by LCQQQ	
P2-B6	P2016-0441-1	isp blood cannabinoids Poky 2016-1.m	P2016-0441-1-r001.d	Sample		AM 6.1.2 Cannabinoids by LCQQQ	Blood
P2-A1	Blank	isp blood cannabinoids Poky 2016-1.m	cann-Carryover blank3_r001.d	Blank		AM 6.1.2 Cannabinoids by LCQQQ	
P2-C3	Blood PC 2	isp blood cannabinoids Poky 2016-1.m	B-POS Ctrl 2-r001.d	Sample		AM 6.1.2 Cannabinoids by LCQQQ	Positive Control-UTAK B1013 + WS060716
P2-A1	Blank	isp blood cannabinoids Poky 2016-1.m	Carryover blank4_r001.d	Blank		AM 6.1.2 Cannabinoids by LCQQQ	

Sample Position	Sample Name	Method	Data File	Sample Type	Level Name	Comment	Info. 
P2-A9	Blank P2016-0473-1	isp blood cannabinoids Poky 2016-1.m	P2016-0473-1_BLK_r001.d	Blank		AM 6.1.2 Cannabinoids by LCQQQ	
P2-B7	P2016-0473-1	isp blood cannabinoids Poky 2016-1.m	P2016-0473-1-r001.d	Sample		AM 6.1.2 Cannabinoids by LCQQQ	Blood
P2-A9	Blank P2016-0474-1	isp blood cannabinoids Poky 2016-1.m	P2016-0474-1_BLK_r001.d	Blank		AM 6.1.2 Cannabinoids by LCQQQ	
P2-B8	P2016-0474-1	isp blood cannabinoids Poky 2016-1.m	P2016-0474-1-r001.d	Sample		AM 6.1.2 Cannabinoids by LCQQQ	Blood
P2-A9	Blank P2016-0475-1	isp blood cannabinoids Poky 2016-1.m	P2016-0475-1_BLK_r001.d	Blank		AM 6.1.2 Cannabinoids by LCQQQ	
P2-B9	P2016-0475-1	isp blood cannabinoids Poky 2016-1.m	P2016-0475-1-r001.d	Sample		AM 6.1.2 Cannabinoids by LCQQQ	Blood
P2-A9	Blank P2016-0572-1	isp blood cannabinoids Poky 2016-1.m	P2016-0572-1_BLK_r001.d	Blank		AM 6.1.2 Cannabinoids by LCQQQ	
P2-C1	P2016-0572-1	isp blood cannabinoids Poky 2016-1.m	P2016-0572-1-r001.d	Sample		AM 6.1.2 Cannabinoids by LCQQQ	Blood
P2-A9	Blank P2016-0614-1	isp blood cannabinoids Poky 2016-1.m	P2016-0614-1_BLK_r001.d	Blank		AM 6.1.2 Cannabinoids by LCQQQ	
P2-C2	P2016-0614-1	isp blood cannabinoids Poky 2016-1.m	P2016-0614-1-r001.d	Sample		AM 6.1.2 Cannabinoids by LCQQQ	Blood
P2-A9	Blank P2016-0667-1	isp blood cannabinoids Poky 2016-1.m	P2016-0667-1_BLK_r001.d	Blank		AM 6.1.2 Cannabinoids by LCQQQ	
P2-C4	P2016-0667-1	isp blood cannabinoids Poky 2016-1.m	P2016-0667-1-r001.d	Sample		AM 6.1.2 Cannabinoids by LCQQQ	Blood
P2-A9	Blank P2016-0669-1	isp blood cannabinoids Poky 2016-1.m	P2016-0669-1_BLK_r001.d	Blank		AM 6.1.2 Cannabinoids by LCQQQ	
P2-C5	P2016-0669-1	isp blood cannabinoids Poky 2016-1.m	P2016-0669-1-r001.d	Sample		AM 6.1.2 Cannabinoids by LCQQQ	Blood
P2-A1	Blank	isp blood cannabinoids Poky 2016-1.m	Blank3-r001.d	Blank		AM 6.1.2 Cannabinoids by LCQQQ	Blood
P1-F9	Blank	Benzos_Z_Drugs_ACN_FA_ISP_2016.m	BZ-Blank1-r001.d	Blank		AM 6.1.1 Benzo and Z by LCQQQ	Blood
P1-F9	Blank	Benzos_Z_Drugs_ACN_FA_ISP_2016.m	BZ-Blank2-r001.d	Blank		AM 6.1.1 Benzo and Z by LCQQQ	Blood
P1-F8	5 ng/mL	Benzos_Z_Drugs_ACN_FA_ISP_2016.m	BZ-5 ng/mL-r001.d	Calibration	1	AM 6.1.1 Benzo and Z by LCQQQ	Blood
P1-F7	10 ng/mL	Benzos_Z_Drugs_ACN_FA_ISP_2016.m	BZ-10 ng/mL-r001.d	Calibration	2	AM 6.1.1 Benzo and Z by LCQQQ	
P1-F6	25 ng/mL	Benzos_Z_Drugs_ACN_FA_ISP_2016.m	BZ-25 ng/mL_r001.d	Calibration	3	AM 6.1.1 Benzo and Z by LCQQQ	
P1-F5	50 ng/mL	Benzos_Z_Drugs_ACN_FA_ISP_2016.m	BZ-50 ng/mL_r001.d	Calibration	4		

Sample Position	Sample Name	Method	Data File	Sample Type	Level Name	Comment	Info. ☺
						AM 6.1.1 Benzo and Z by LCQQQ	
P1-F4	100 ngmL	Benzos_Z_Drugs_ACN_FA_ISP_2016.m	BZ-100 ngmL_r001.d	Calibration	5	AM 6.1.1 Benzo and Z by LCQQQ	
P1-F3	500 ngmL	Benzos_Z_Drugs_ACN_FA_ISP_2016.m	BZ-500 ngmL_r001.d	Calibration	6	AM 6.1.1 Benzo and Z by LCQQQ	
P1-F2	1000 ngmL	Benzos_Z_Drugs_ACN_FA_ISP_2016.m	BZ-1000 ngmL_r001.d	Calibration	7	AM 6.1.1 Benzo and Z by LCQQQ	
P1-F1	3000 ngmL	Benzos_Z_Drugs_ACN_FA_ISP_2016.m	BZ-3000 ngmL_r001.d	Calibration	8	AM 6.1.1 Benzo and Z by LCQQQ	
P1-F9	Blank	Benzos_Z_Drugs_ACN_FA_ISP_2016.m	BZ-Carryover blank1_r001.d	Blank		AM 6.1.1 Benzo and Z by LCQQQ	
P1-E9	Negative Blood Control	Benzos_Z_Drugs_ACN_FA_ISP_2016.m	BZ-NC-B_r001.d	Sample		AM 6.1.1 Benzo and Z by LCQQQ	UTAK Negative Whole Blood LOT B1013
P1-E8	Positive Blood Control	Benzos_Z_Drugs_ACN_FA_ISP_2016.m	BZ-PC-B-r001.d	Sample		AM 6.1.1 Benzo and Z by LCQQQ	Benzodiazepines Mix Cerilliant lot FE012413-02 in UTAK LOT B1013
P1-E9	Blank - M2016-0739-1	Benzos_Z_Drugs_ACN_FA_ISP_2016.m	BZ-Carryover blank-M2016-0739-1_r001.d	Blank		AM 6.1.1 Benzo and Z by LCQQQ	
P1-E7	M2016-0739-1	Benzos_Z_Drugs_ACN_FA_ISP_2016.m	BZ-M2016-0739-1-r001.d	Sample		AM 6.1.1 Benzo and Z by LCQQQ	Blood
P1-E9	Blank - M2016-0983-1	Benzos_Z_Drugs_ACN_FA_ISP_2016.m	BZ-Carryover blank-M2016-0983-1_r001.d	Blank		AM 6.1.1 Benzo and Z by LCQQQ	
P1-E6	M2016-0983-1	Benzos_Z_Drugs_ACN_FA_ISP_2016.m	BZ-M2016-0983-1-r001.d	Sample		AM 6.1.1 Benzo and Z by LCQQQ	Blood
P1-E9	Blank - P2016-0433-1	Benzos_Z_Drugs_ACN_FA_ISP_2016.m	BZ-Carryover blank-P2016-0433-1_r001.d	Blank		AM 6.1.1 Benzo and Z by LCQQQ	
P1-E5	P2016-0433-1	Benzos_Z_Drugs_ACN_FA_ISP_2016.m	BZ-P2016-0433-1-r001.d	Sample		AM 6.1.1 Benzo and Z by LCQQQ	Blood
P1-E9	Blank - P2016-0474-1	Benzos_Z_Drugs_ACN_FA_ISP_2016.m	BZ-Carryover blank-P2016-0474-1_r001.d	Blank		AM 6.1.1 Benzo and Z by LCQQQ	
P1-E4	P2016-0474-1	Benzos_Z_Drugs_ACN_FA_ISP_2016.m	BZ-P2016-0474-1-r001.d	Sample		AM 6.1.1 Benzo and Z by LCQQQ	Blood
P1-E9	Blank - P2016-0525-1	Benzos_Z_Drugs_ACN_FA_ISP_2016.m	BZ-Carryover blank-P2016-0525-1_r001.d	Blank		AM 6.1.1 Benzo and Z by LCQQQ	
P1-E3	P2016-0525-1	Benzos_Z_Drugs_ACN_FA_ISP_2016.m	BZ-P2016-0525-1-r001.d	Sample		AM 6.1.1 Benzo and Z by LCQQQ	Blood
P1-E9	Blank - P2016-0527-1	Benzos_Z_Drugs_ACN_FA_ISP_2016.m	BZ-Carryover blank-P2016-0527-1_r001.d	Blank		AM 6.1.1 Benzo and Z by LCQQQ	
P1-E2	P2016-0527-1	Benzos_Z_Drugs_ACN_FA_ISP_2016.m	BZ-P2016-0527-1-r001.d	Sample		AM 6.1.1 Benzo and Z by LCQQQ	Blood

Sample Position	Sample Name	Method	Data File	Sample Type	Level Name	Comment	Info. ۹
P1-E9	Blank - P2016-0544-1	Benzos_Z_Drugs_ACN_FA_ISP_2016.m	BZ-Carryover blank-P2016-0544-1_r001.d	Blank		AM 6.1.1 Benzo and Z by LCQQQ	
P1-E1	P2016-0544-1	Benzos_Z_Drugs_ACN_FA_ISP_2016.m	BZ-P2016-0544-1-r001.d	Sample		AM 6.1.1 Benzo and Z by LCQQQ	Blood
P1-E9	Blank - P2016-0568-1	Benzos_Z_Drugs_ACN_FA_ISP_2016.m	BZ-Carryover blank-P2016-0568-1_r001.d	Blank		AM 6.1.1 Benzo and Z by LCQQQ	
P1-D9	P2016-0568-1	Benzos_Z_Drugs_ACN_FA_ISP_2016.m	BZ-P2016-0568-1-r001.d	Sample		AM 6.1.1 Benzo and Z by LCQQQ	Blood
P1-E9	Blank - P2016-0572-1	Benzos_Z_Drugs_ACN_FA_ISP_2016.m	BZ-Carryover blank-P2016-0572-1_r001.d	Blank		AM 6.1.1 Benzo and Z by LCQQQ	
P1-D8	P2016-0572-1	Benzos_Z_Drugs_ACN_FA_ISP_2016.m	BZ-P2016-0572-1-r001.d	Sample		AM 6.1.1 Benzo and Z by LCQQQ	Blood
P1-E9	Blank - P2016-0655-1	Benzos_Z_Drugs_ACN_FA_ISP_2016.m	BZ-Carryover blank-P2016-0655-1_r001.d	Blank		AM 6.1.1 Benzo and Z by LCQQQ	
P1-D7	P2016-0655-1	Benzos_Z_Drugs_ACN_FA_ISP_2016.m	BZ-P2016-0655-1-r001.d	Sample		AM 6.1.1 Benzo and Z by LCQQQ	Blood
P1-E9	Blank - P2016-0669-1	Benzos_Z_Drugs_ACN_FA_ISP_2016.m	BZ-Carryover blank-P2016-0669-1_r001.d	Blank		AM 6.1.1 Benzo and Z by LCQQQ	
P1-D6	P2016-0669-1	Benzos_Z_Drugs_ACN_FA_ISP_2016.m	BZ-P2016-0669-1-r001.d	Sample		AM 6.1.1 Benzo and Z by LCQQQ	Blood
P1-E9	Blank - P2016-0785-1	Benzos_Z_Drugs_ACN_FA_ISP_2016.m	BZ-Carryover blank-P2016-0785-1_r001.d	Blank		AM 6.1.1 Benzo and Z by LCQQQ	
P1-D5	P2016-0785-1	Benzos_Z_Drugs_ACN_FA_ISP_2016.m	BZ-P2016-0785-1-r001.d	Sample		AM 6.1.1 Benzo and Z by LCQQQ	Blood
P1-F9	Blank	Benzos_Z_Drugs_ACN_FA_ISP_2016.m	BZ-Carryover blank3_r001.d	Blank		AM 6.1.1 Benzo and Z by LCQQQ	

ISP Forensics Calibration Curve Report

Batch Data Path C:\MassHunter\Data\2016\Combined\080216 CS\QuantResults\8216 cannabinoids.batch.bin

Last Calib Update 8/3/2016 11:03 AM

Analyst Name

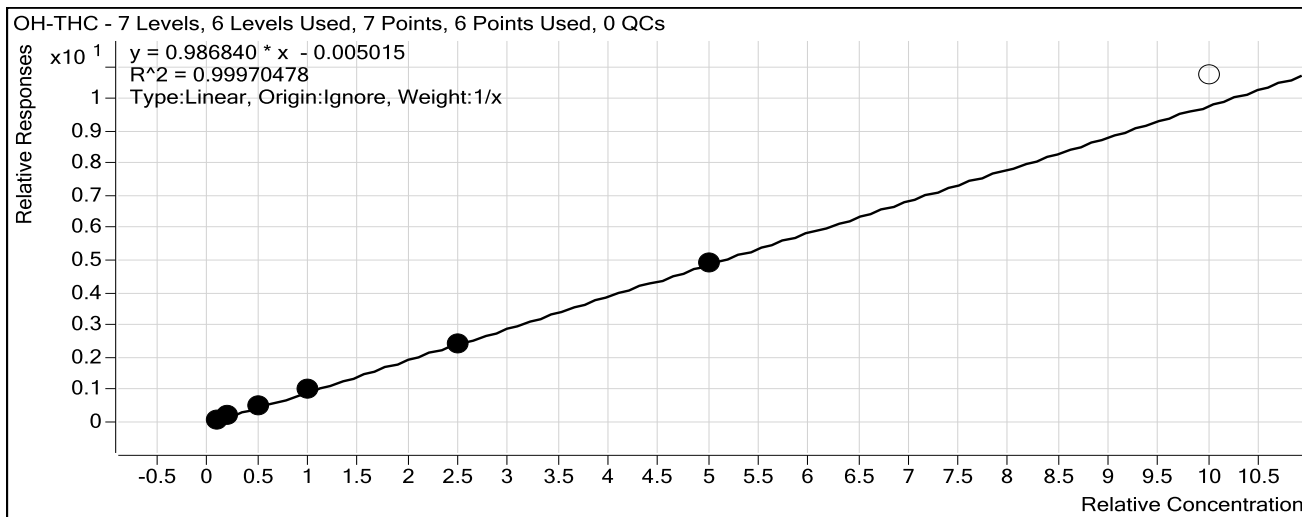
ISP TOX

Target Compound *OH-THC*

OH-THC

Internal Standard

OH-THC-d3



Sample	Level	Enabled	Exp Conc	Final Conc	Accuracy
Blood: 1_5 ng/mL	1	<input checked="" type="checkbox"/>	1	1.0	97.8
Blood: 2_10 ng/mL	2	<input checked="" type="checkbox"/>	2	2.0	99.1
Blood: 5_25 ng/mL	3	<input checked="" type="checkbox"/>	5	5.0	100.2
Blood: 10_50 ng/mL	4	<input checked="" type="checkbox"/>	10	10.4	104.2
Blood: 25_125 ng/mL	5	<input checked="" type="checkbox"/>	25	24.7	98.9
Blood: 50_250 ng/mL	6	<input checked="" type="checkbox"/>	50	49.9	99.8
Blood: 100_500 ng/mL	7	<input type="checkbox"/>	100	108.7	108.7

ISP Forensics Calibration Curve Report

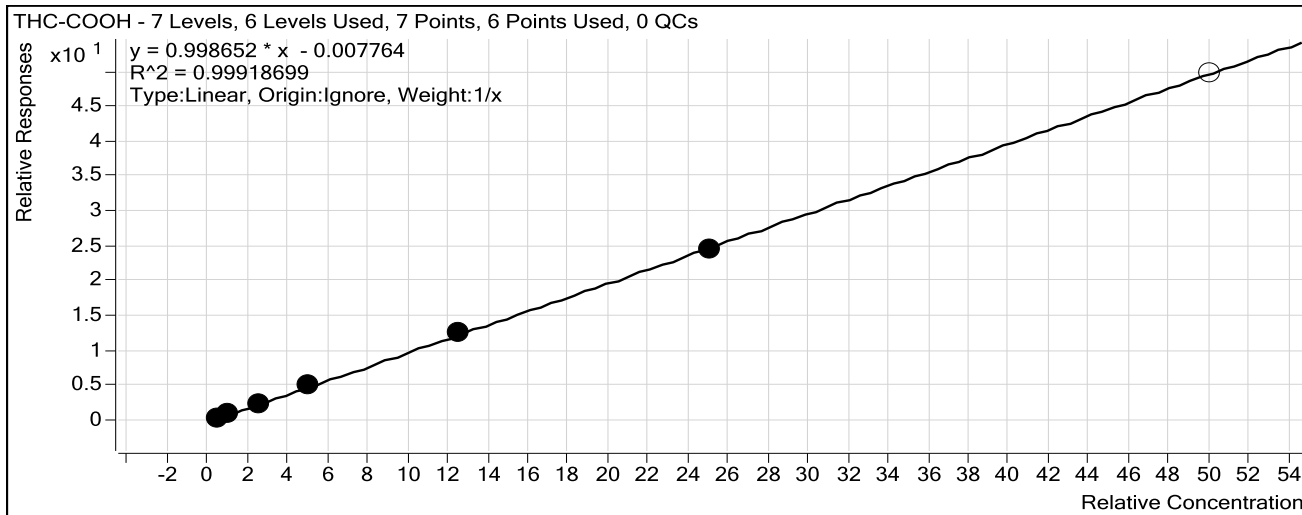
Batch Data Path C:\MassHunter\Data\2016\Combined\080216 CS\QuantResults\8216 cannabinoids.batch.bin

Last Calib Update 8/3/2016 11:03 AM

Analyst Name ISP TOX

Target Compound *THC-COOH*

Internal Standard *THC-COOH-d3*



Sample	Level	Enabled	Exp Conc	Final Conc	Accuracy
Blood: 1_5 ng/mL	1	<input checked="" type="checkbox"/>	5	5.0	99.5
Blood: 2_10 ng/mL	2	<input checked="" type="checkbox"/>	10	9.6	96.2
Blood: 5_25 ng/mL	3	<input checked="" type="checkbox"/>	25	24.6	98.6
Blood: 10_50 ng/mL	4	<input checked="" type="checkbox"/>	50	52.8	105.7
Blood: 25_125 ng/mL	5	<input checked="" type="checkbox"/>	125	127.3	101.8
Blood: 50_250 ng/mL	6	<input checked="" type="checkbox"/>	250	245.6	98.2
Blood: 100_500 ng/mL	7	<input type="checkbox"/>	500	497.8	99.6

ISP Forensics Calibration Curve Report

Batch Data Path C:\MassHunter\Data\2016\Combined\080216 CS\QuantResults\8216 cannabinoids.batch.bin

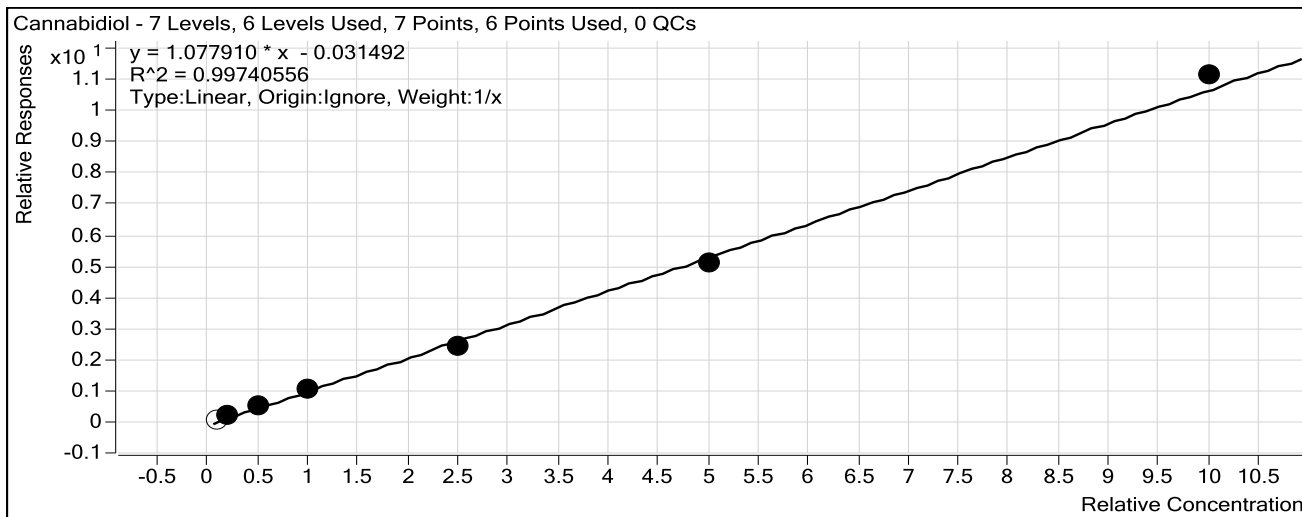
Last Calib Update 8/3/2016 11:03 AM

Analyst Name

ISP TOX

Target Compound *Cannabidiol*

Internal Standard *Cannabidiol-d3*



Sample	Level	Enabled	Exp Conc	Final Conc	Accuracy
Blood: 1_5 ng/mL	1	<input type="checkbox"/>	1	1.2	118.4
Blood: 2_10 ng/mL	2	<input checked="" type="checkbox"/>	2	2.2	108.3
Blood: 5_25 ng/mL	3	<input checked="" type="checkbox"/>	5	4.8	96.1
Blood: 10_50 ng/mL	4	<input checked="" type="checkbox"/>	10	10.4	103.5
Blood: 25_125 ng/mL	5	<input checked="" type="checkbox"/>	25	23.2	92.8
Blood: 50_250 ng/mL	6	<input checked="" type="checkbox"/>	50	47.8	95.7
Blood: 100_500 ng/mL	7	<input checked="" type="checkbox"/>	100	103.7	103.7

ISP Forensics Calibration Curve Report

Batch Data Path C:\MassHunter\Data\2016\Combined\080216 CS\QuantResults\8216 cannabinoids.batch.bin

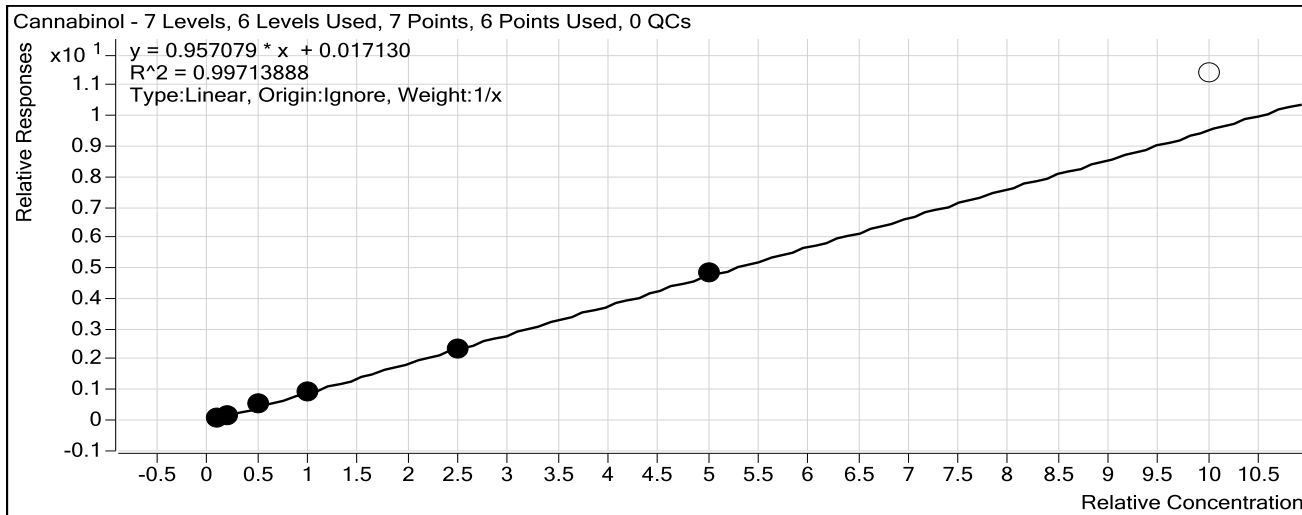
Last Calib Update 8/3/2016 11:03 AM

Analyst Name

ISP TOX

Target Compound *Cannabinol*

Internal Standard *Cannabinol-d3*



Sample	Level	Enabled	Exp Conc	Final Conc	Accuracy
Blood: 1_5 ng/mL	1	<input checked="" type="checkbox"/>	1	1.0	99.8
Blood: 2_10 ng/mL	2	<input checked="" type="checkbox"/>	2	1.8	89.3
Blood: 5_25 ng/mL	3	<input checked="" type="checkbox"/>	5	5.8	116.3
Blood: 10_50 ng/mL	4	<input checked="" type="checkbox"/>	10	9.7	97.3
Blood: 25_125 ng/mL	5	<input checked="" type="checkbox"/>	25	24.0	96.0
Blood: 50_250 ng/mL	6	<input checked="" type="checkbox"/>	50	50.7	101.3
Blood: 100_500 ng/mL	7	<input type="checkbox"/>	100	118.9	118.9

ISP Forensics Calibration Curve Report

Batch Data Path C:\MassHunter\Data\2016\Combined\080216 CS\QuantResults\8216 cannabinoids.batch.bin

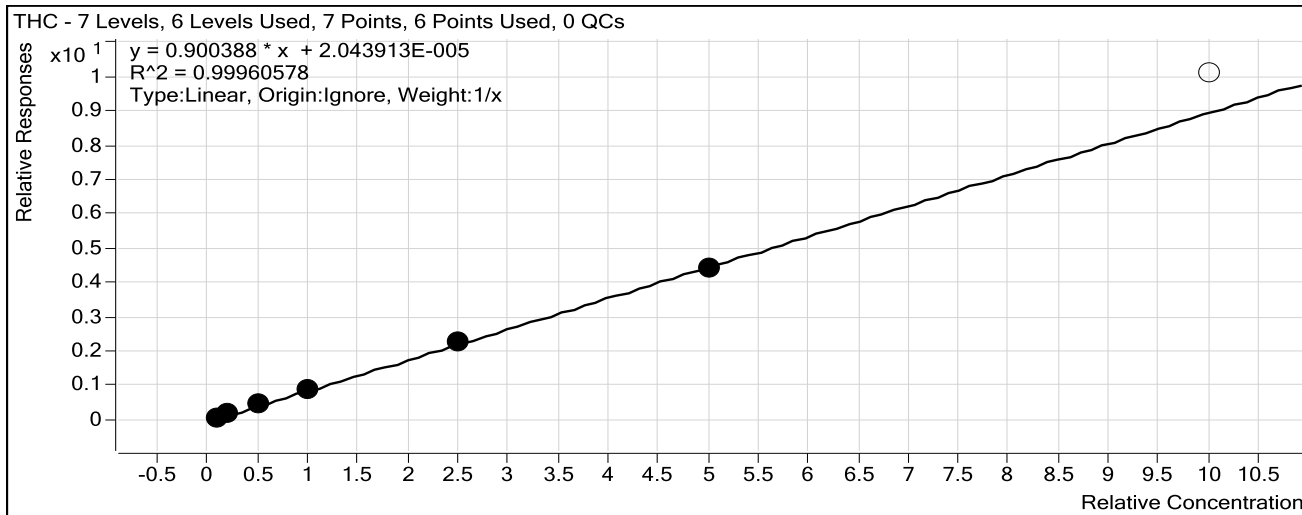
Last Calib Update 8/3/2016 11:03 AM

Analyst Name

ISP TOX

Target Compound *THC*

Internal Standard *THC-d3*



Sample	Level	Enabled	Exp Conc	Final Conc	Accuracy
Blood: 1_5 ng/mL	1	<input checked="" type="checkbox"/>	1	1.0	95.6
Blood: 2_10 ng/mL	2	<input checked="" type="checkbox"/>	2	2.1	102.9
Blood: 5_25 ng/mL	3	<input checked="" type="checkbox"/>	5	5.0	100.4
Blood: 10_50 ng/mL	4	<input checked="" type="checkbox"/>	10	10.0	99.9
Blood: 25_125 ng/mL	5	<input checked="" type="checkbox"/>	25	25.6	102.6
Blood: 50_250 ng/mL	6	<input checked="" type="checkbox"/>	50	49.3	98.7
Blood: 100_500 ng/mL	7	<input type="checkbox"/>	100	112.0	112.0

CS

ISP FORENSICS

Pocatello

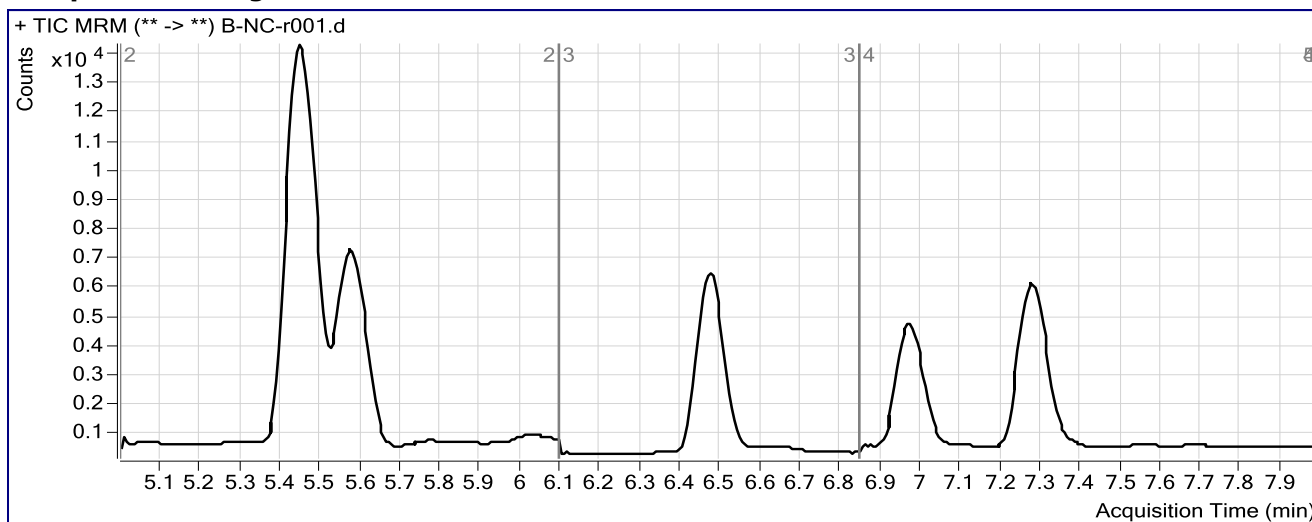
Cannabinoid Analysis Report

Batch Data Path	C:\MassHunter\Data\2016\Combined\080216 CS\QuantResults\8216 cannabinoids.batch.bin		
Analysis Time	8/3/2016 11:03 AM	Analyst Name	ISPUser
Report Time	8/3/2016 11:06 AM	Reporter Name	ISPUser
Last Calib Update	8/3/2016 11:03 AM	Batch State	Processed

Analysis Info

Acq Time	2016-08-02 16:04	Data File	B-NC-r001.d
Sample Type	Sample	Sample Name	Blood Negative Control
Dilution	1	Acq Method	isp blood cannabinoids Poky 2016-1.m
Position	P2-A9	Sample Info	Negative Blood UTAK Lot B1013
Inj Vol	-1	Comment	AM 6.1.2 Cannabinoids by LCQQQ

Sample Chromatogram



ISP FORENSICS

Pocatello

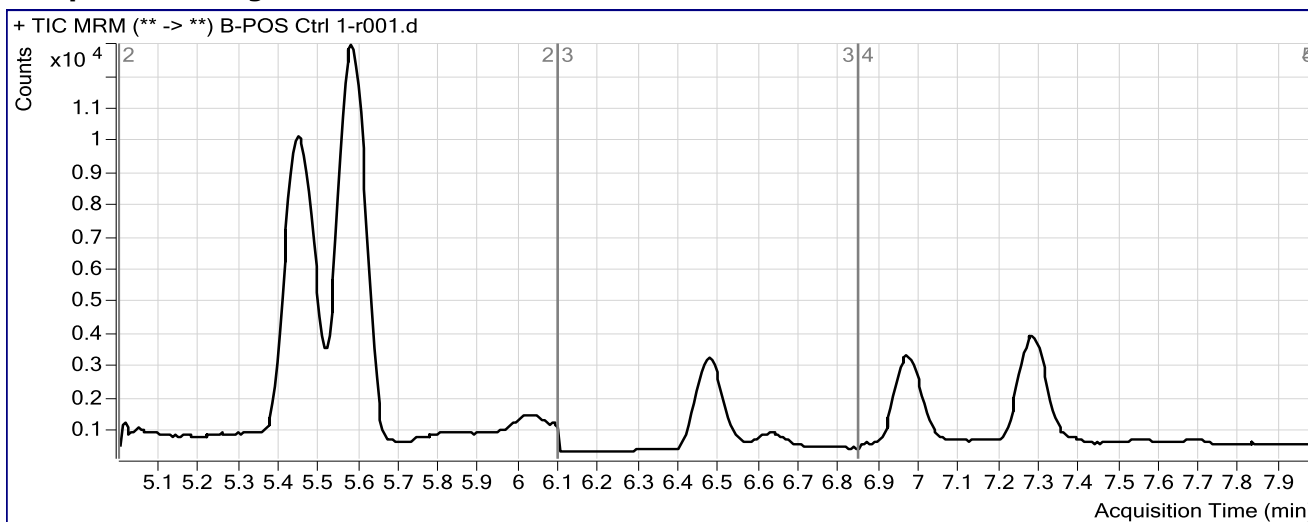
Cannabinoid Analysis Report

Batch Data Path	C:\MassHunter\Data\2016\Combined\080216 CS\QuantResults\8216 cannabinoids.batch.bin		
Analysis Time	8/3/2016 11:03 AM	Analyst Name	ISPUser
Report Time	8/3/2016 11:06 AM	Reporter Name	ISPUser
Last Calib Update	8/3/2016 11:03 AM	Batch State	Processed

Analysis Info

Acq Time	2016-08-02 16:18	Data File	B-POS Ctrl 1-r001.d
Sample Type	Sample	Sample Name	Blood PC 1
Dilution	1	Acq Method	isp blood cannabinoids Poky 2016-1.m
Position	P2-B1	Sample Info	Positive Control- UTAK B1013 + WS060716
Inj Vol	-1	Comment	AM 6.1.2 Cannabinoids by LCQQQ

Sample Chromatogram



Results

Compound	ISTD Compound	RT	Response	ISTD Resp	Resp Ratio	Final Conc
THC-COOH	THC-COOH-d3	5.586	13160	8582	1.5336	15.4340
Cannabinol	Cannabinol-d3	6.972	2580	7007	0.3683	3.6689
THC	THC-d3	7.283	1702	6318	0.2693	2.9906

9

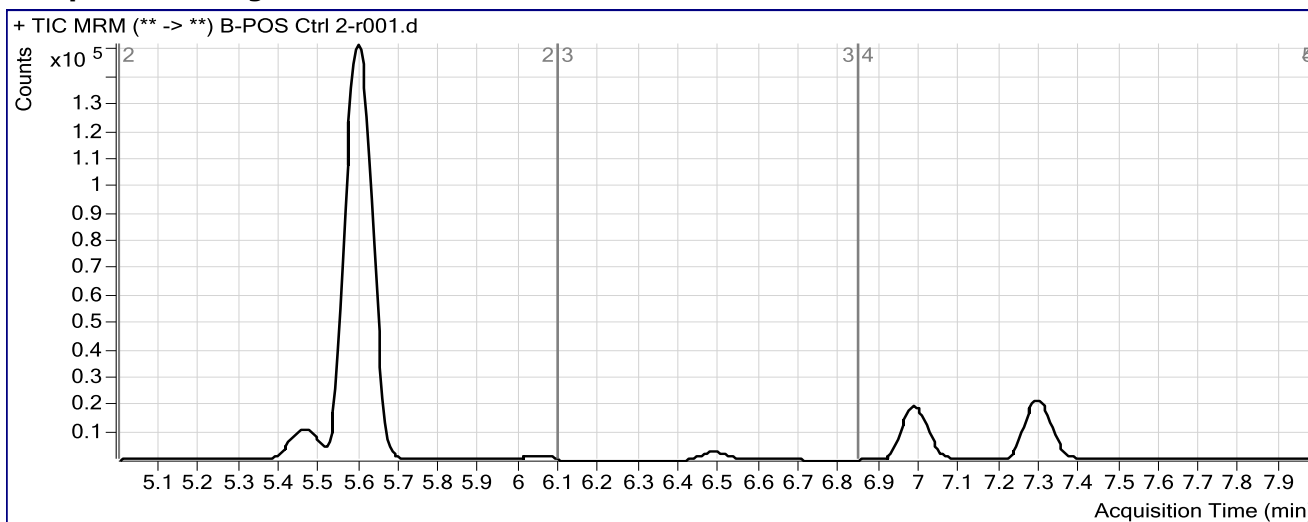
ISP FORENSICS Pocatello Cannabinoid Analysis Report

Batch Data Path C:\MassHunter\Data\2016\Combined\080216 CS\QuantResults\8216 cannabinoids.batch.bin
Analysis Time 8/3/2016 11:03 AM **Analyst Name** ISPUser
Report Time 8/3/2016 11:07 AM **Reporter Name** ISPUser
Last Calib Update 8/3/2016 11:03 AM **Batch State** Processed

Analysis Info

Acq Time 2016-08-02 19:10 **Data File** B-POS Ctrl 2-r001.d
Sample Type Sample **Sample Name** Blood PC 2
Dilution 1 **Acq Method** isp blood cannabinoids Poky 2016-1.m
Position P2-C3 **Sample Info** Positive Control- UTAK B1013 + WS060716
Inj Vol -1 **Comment** AM 6.1.2 Cannabinoids by LCQQQ

Sample Chromatogram



Results

Compound	ISTD Compound	RT	Response	ISTD Resp	Resp Ratio	Final Conc
THC-COOH	THC-COOH-d3	5.597	262038	9987	26.2383	262.8147
Cannabidiol	Cannabidiol-d3	6.516	89	6668	0.0133	0.4154
Cannabinol	Cannabinol-d3	6.984	54644	8634	6.3290	65.9490
THC	THC-d3	7.289	35268	6742	5.2307	58.0936